

Meraki Realty focuses on development of residential, commercial and industrial real estate with strong emphasis on practical design, high quality construction and maintenance support.

Meraki Realty strives towards high level of client and investor satisfaction by having a transparent engagement model and a higher standard of service delivery.



Shaunak Kothari +91 8980 767676 • Jaymin Kothari +91 9879 572487
info@merakirealty.com • 22 Alkapuri Society, Vadodara





9 Boutique Apartments

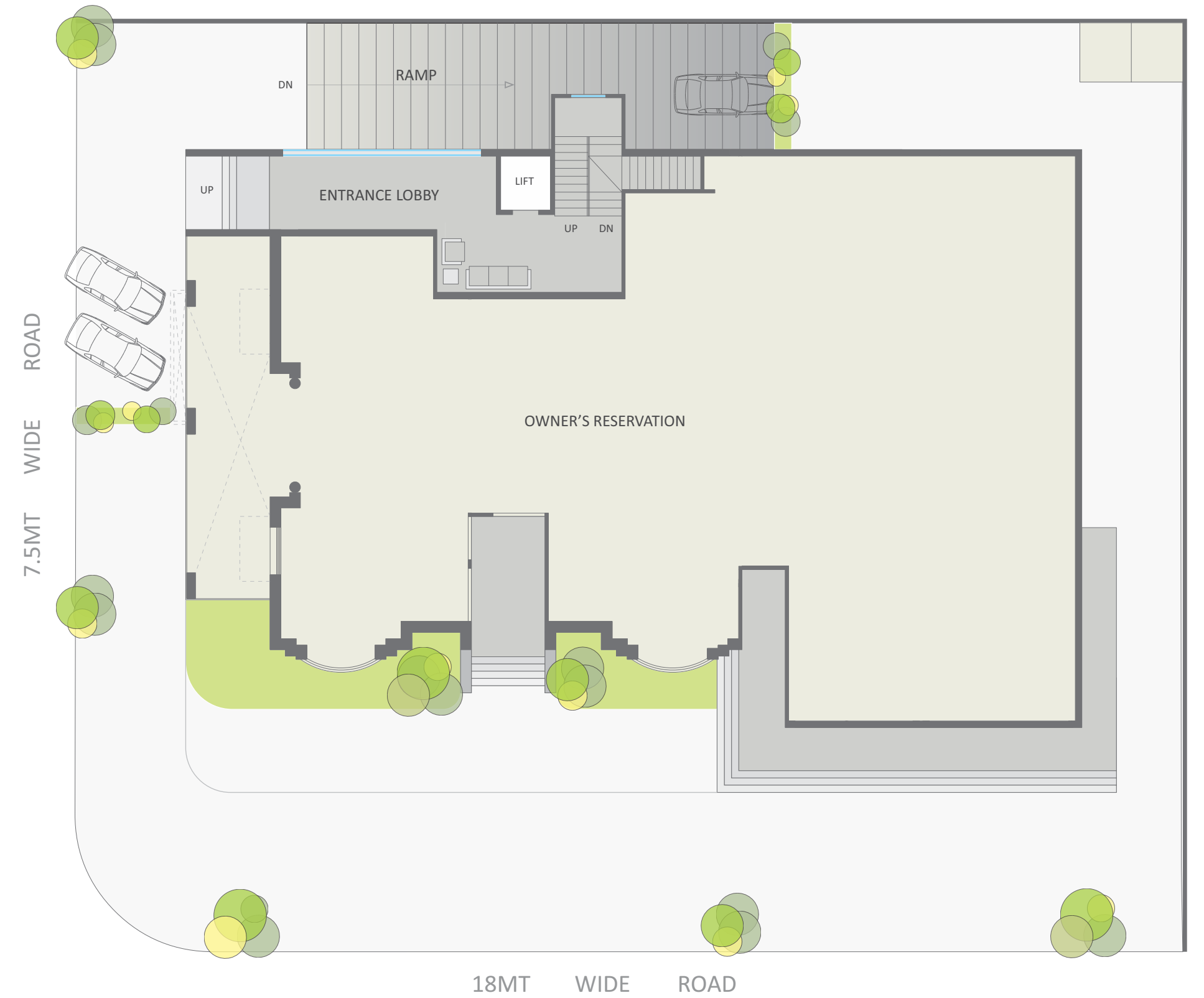
Finest Location in the City

Inspired by Classical Architecture

Multilevel Parking

High Quality Construction





GROUND FLOOR LAYOUT





7.5MT WIDE ROAD

18MT WIDE ROAD

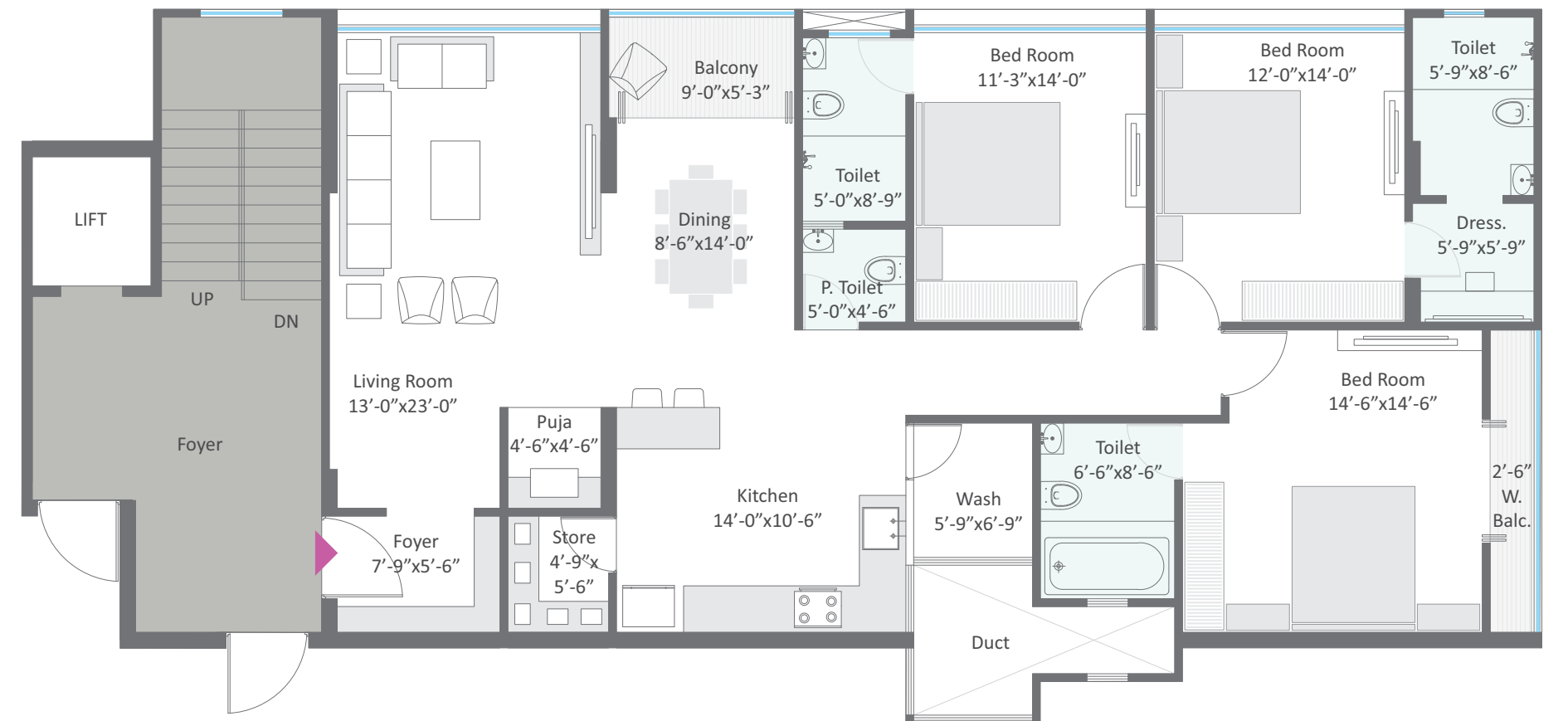
PARKING LAYOUT





Unit No. - 202/302
Built Up Area - 1870 ft²

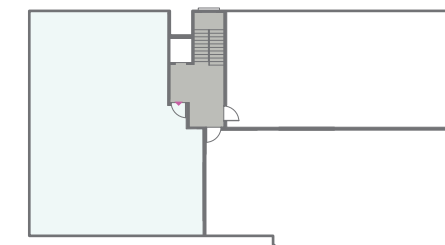
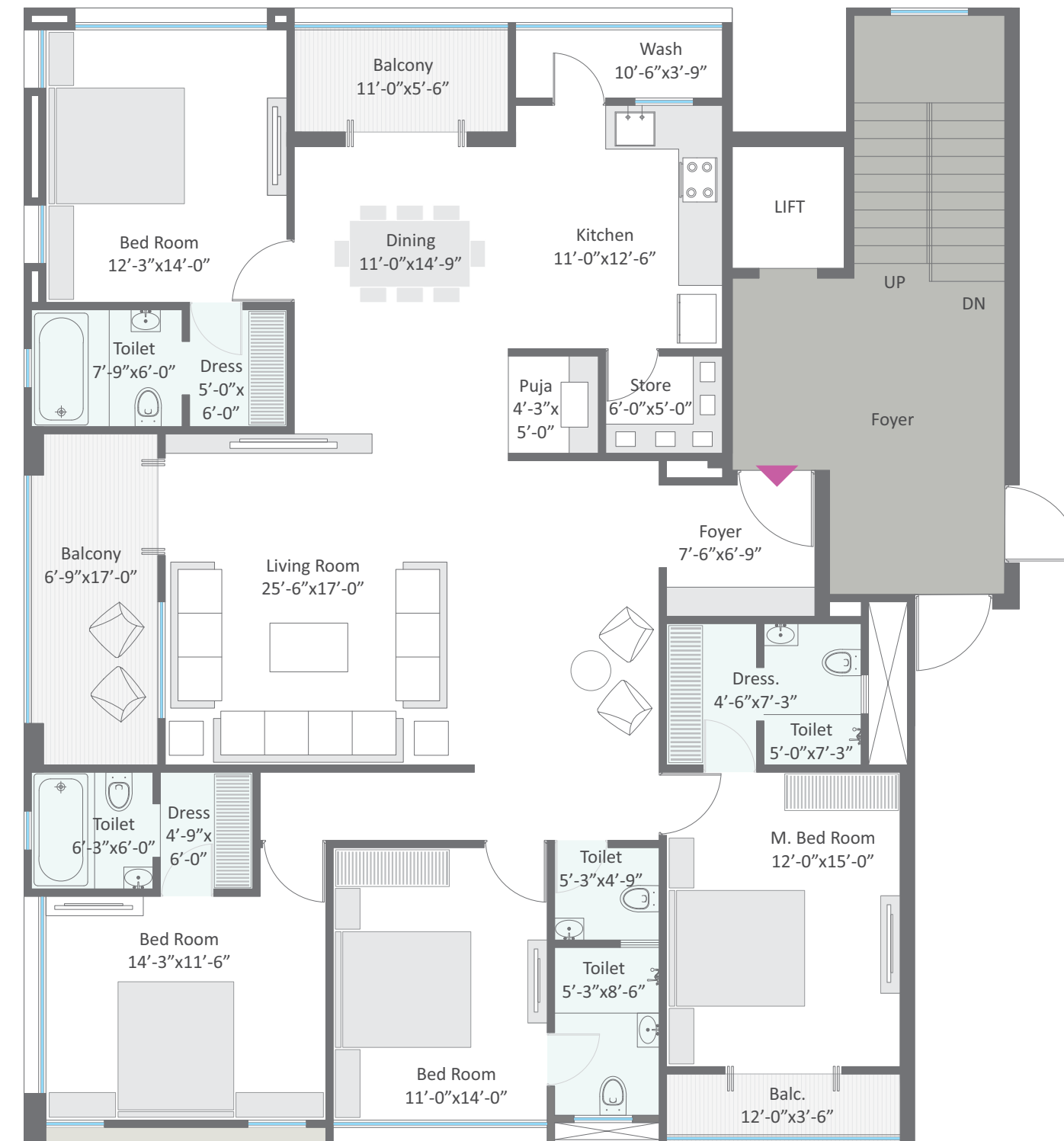
3 BHK LAYOUT - TYPE A



Unit No. - 203/303
Built Up Area - 1760 ft²

3 BHK LAYOUT - TYPE B

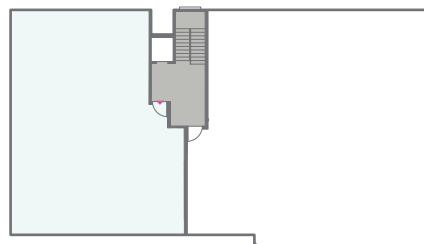
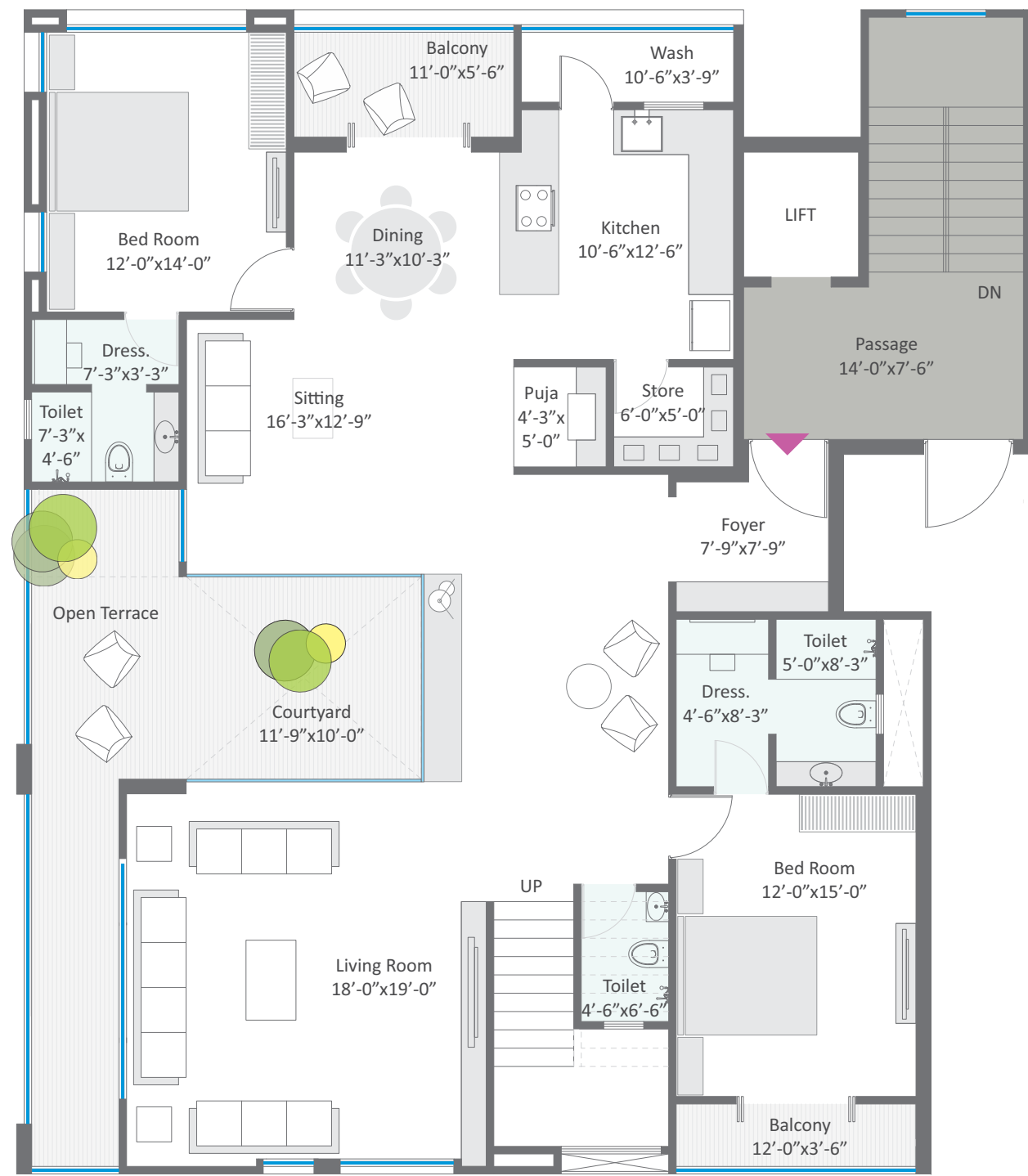




Unit No. - 201/301
Built Up Area - 2380 ft²

4 BHK LAYOUT

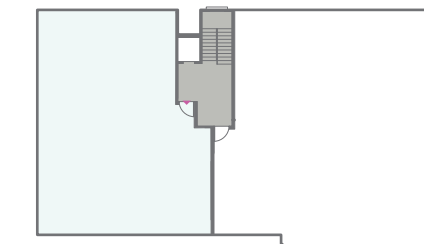
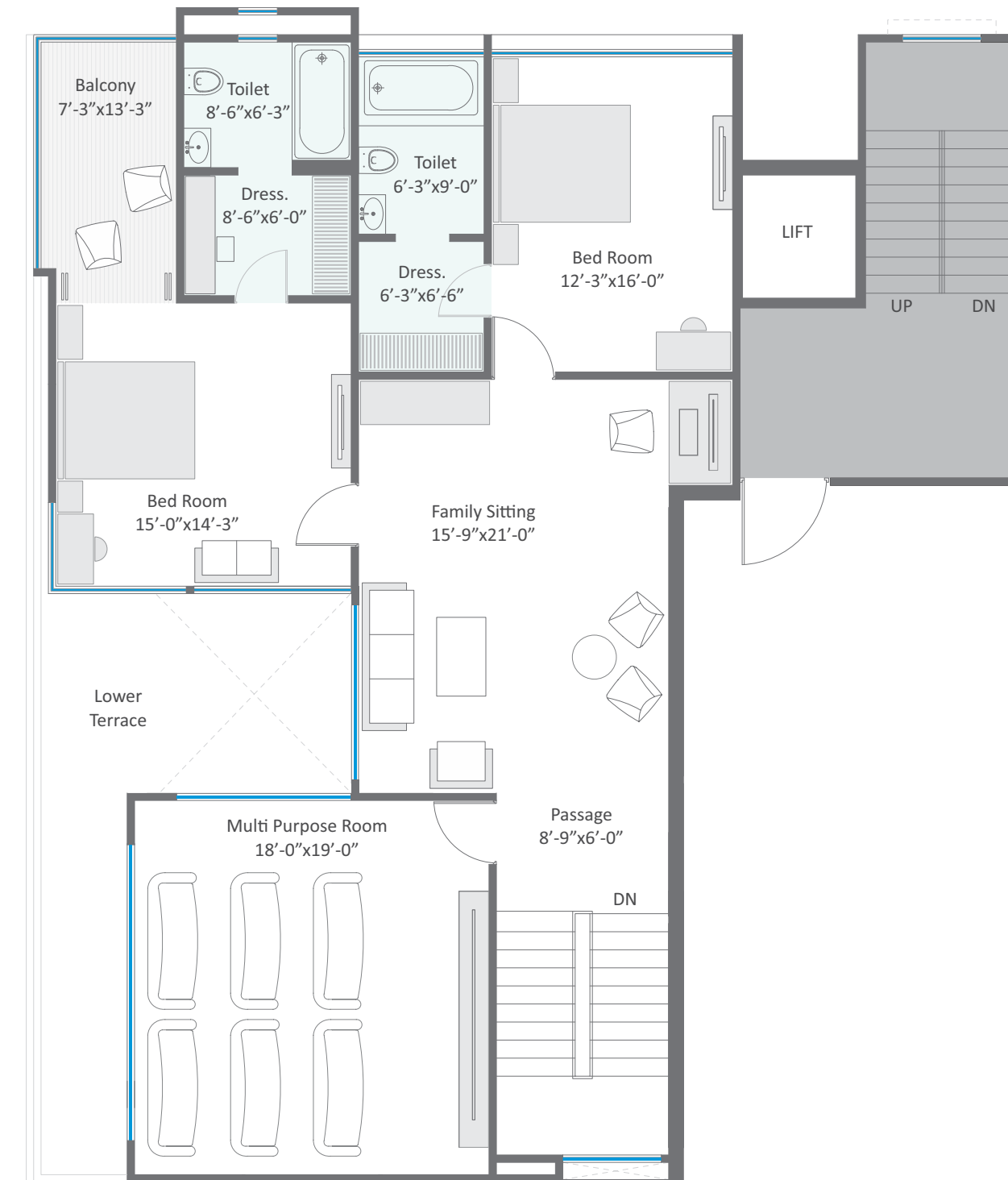




Unit No. - 401
 Built Up Area - 2070 ft²
 Terrace Area - 305 ft²



PENTHOUSE LOWER LEVEL



Unit No. - 401
 Built Up Area - 1730 ft²



PENTHOUSE UPPER LEVEL

Unit Specifications

Flooring:

Marble Flooring - Living room, dining, puja room and foyer
Vitrified Tiles - Other area

Toilet:

Floor - Anti-skid tiles with dado upto lintel level
Fixtures - Kohler or equivalent

Windows:

UPVC/Aluminum windows with glazed glass
Floor-to-ceiling windows

Doors:

Wooden flush doors with veneer and laminate finish

Kitchen:

Granite platform with stainless steel sink
Provision for R/O system with dedicated waterline at kitchen sink and refrigerator
Provision for gas geyser

Electrical:

Branded copper wiring and modular switches
Television, AC and telephone points in all rooms
Geyser point in all bathrooms
Provision for Invertor system

Internal Finish:

Gypsum based false ceiling
Inside walls will be painted with emulsion paint after putty coating

Airconditioner:

Copper wiring along with water drain pipes in all rooms

Building Specifications

Structure:

Earthquake resistant RCC/PT structure
Cement- Ultratech Cement
Steel- ArcelorMittal / Tata / SAIL Steel

Plumbing:

Superior quality and accessible CPVC plumbing
Centralized water softening plant

Parking:

Minimum 2 car allotted parking
Modern car parking with polyurethane coating, air vents and green spaces

Lobby:

Luxurious lobby with waiting lounge

Security:

24x7 Multi-band security surveillance with CCTV camera in all common spaces
Intercom facility

Other:

Power backup for essential common services including lift
3 level anti-termite treatment

Meraki Assurance

Builder backed repair and maintenance support for one year after project completion.